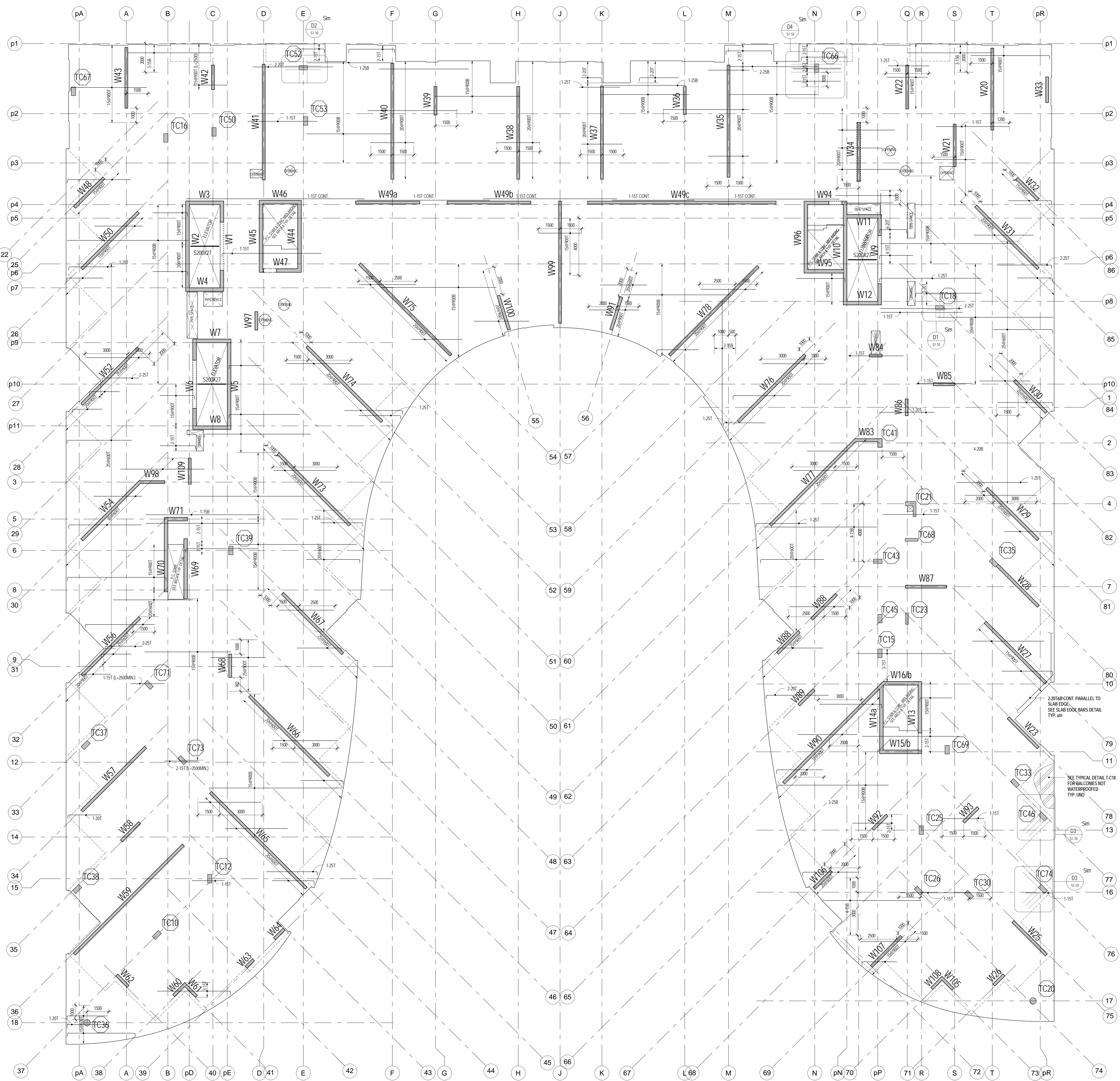
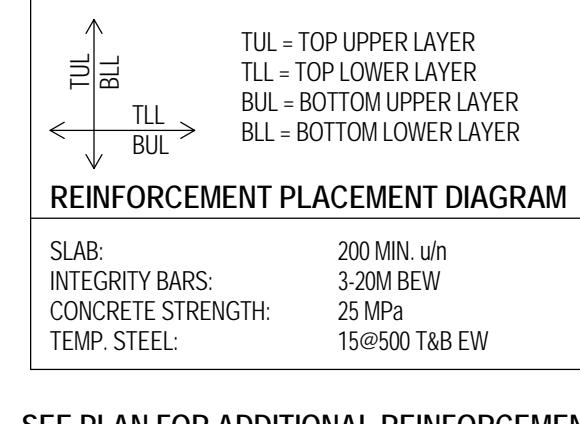
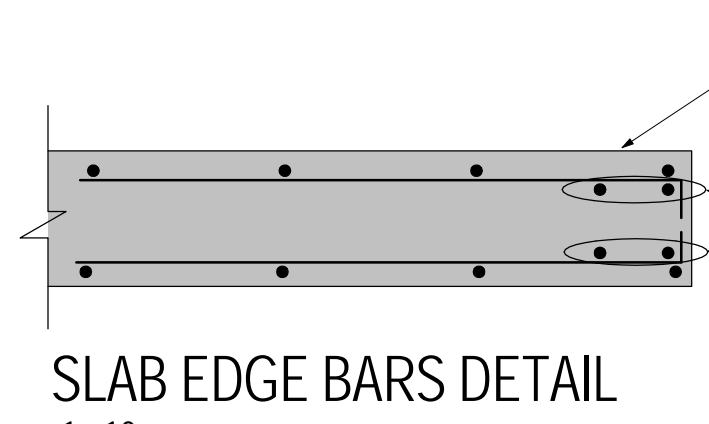
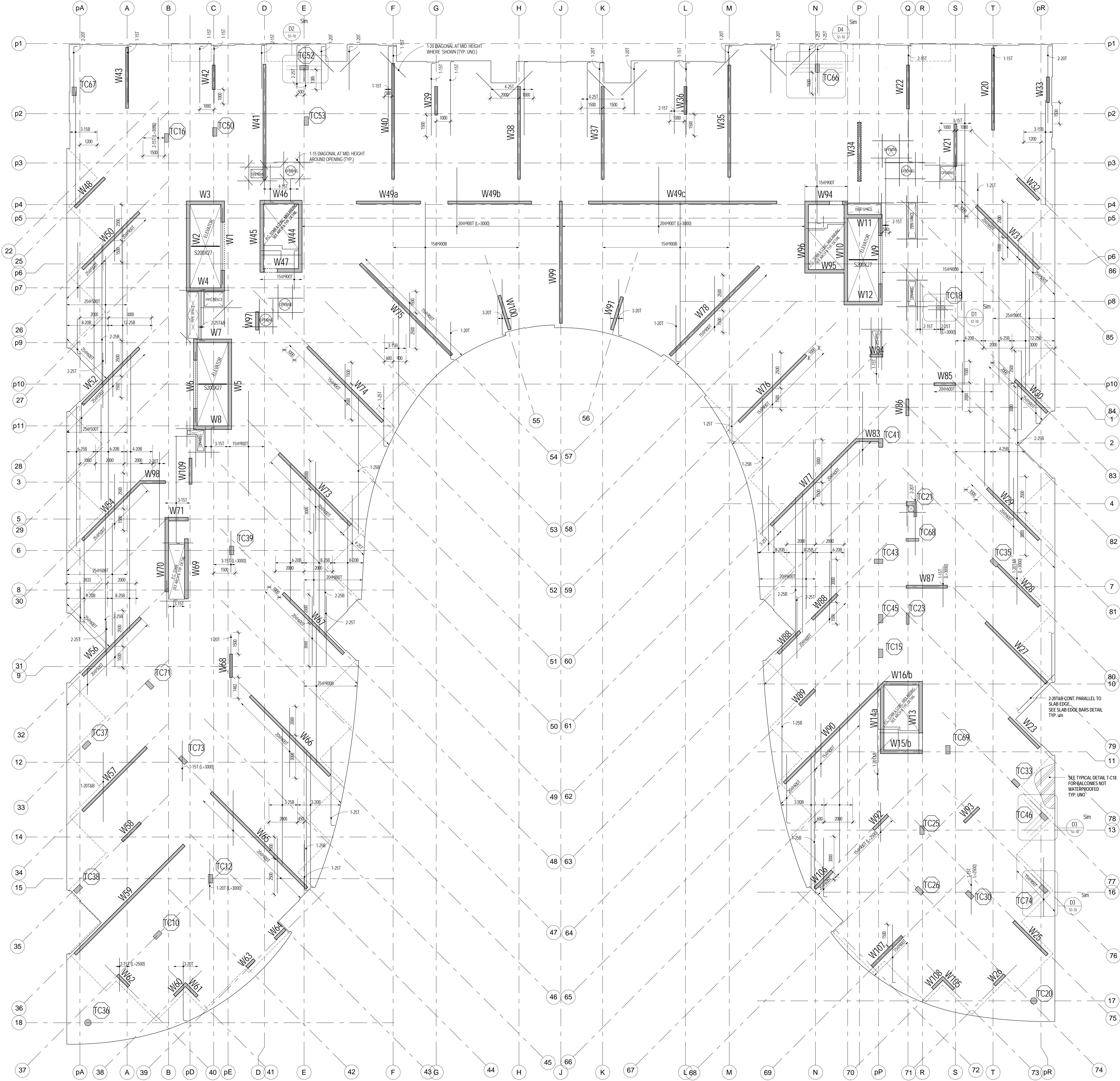


LEVEL 5 FRAMING PLAN - WITH BUL AND TLL
1:100





LEVEL 5 FRAMING PLAN WITH BLL AND TLL
1:100



NOTES:

- TOP OF STRUCTURAL SLAB TO BE GIVEN BELOW FINISHED FLOOR DATUM ELEVATION EXCEPT AS CROSS-OUT AND NOTED. SEE ARCHITECTURAL DRAWINGS FOR DATUM ELEVATION.
- THE STRUCTURAL SLAB HAS BEEN DESIGNED FOR THE FOLLOWING LOADS (ALL IN KPa):
 - DEAD LOAD (DL) 1.5
 - LIVE LOAD (LL) 2.0
 - WIND LOAD (WL) 0.5
 - SEISMIC LOAD (SL) 0.5
- AN ALLOWANCE FOR SHOR LOADS OF 1.5 KPa HAS BEEN CONSIDERED.
- CONCRETE COVER FOR TOP AND BOTTOM BARS IN SLAB TO BE 25 mm.
- APPROVAL MUST BE OBTAINED FROM ENGINEER FOR ALL CHANGES OTHER THAN THOSE SHOWN ON PLAN.
- THE PROJECT SUPERINTENDENT MUST CONTACT THE SERVICE 24 HOURS PRIOR TO PLACING STRUCTURAL CONCRETE FOR A REVIEW PRESENTATION.
- SEE ALL 50 TYPICAL NOTES AND DETAILS.
- SEE REBAR AND COLUMN COORDINATES, WALL ELEVATIONS.
- PROVIDE CONTINUOUS REBAR OVER STEEL TOP AND BOTTOM, HOOKED AT EDGE OF SLAB AND EXTENDING IN ACCORDANCE TO REINFORCEMENT SCHEDULE.
- PROVIDE TIE FOR ALL SLAB REINFORCEMENT.
- WALL COORDINATE AT PERIMETER REBAR BARS TO SUPPORT SLAB EDGE. SEE SLAB EDGE BARS DETAIL.

Contractor Must Check And Verify All Dimensions On The Job.
Do Not Scale The Drawings.
All Drawings, Specifications And Related Documents Are The Copyright Of The Architect And Shall Remain The Property Of The Architect.
Reproduction Of Drawings, Specifications And Related Documents In Any Form Or Manner Without The Architect's Written Permission Is Prohibited.
Date: _____



stephenson
ENGINEERING

2550 Victoria Park Ave. Suite 100
Toronto, ON M2J 5A9 | Tel: (416) 435-9700
www.stephenson-eng.com | info@stephenson-eng.com

4	BUILDING PERMIT	SEPT 21 2015
3	REVISION	JULY 22 2015
2	BUILDING PERMIT	JUNE 12 2015
1	ISSUED FOR REVIEW	MAY 01 2015

AQUAVISTA
AT BAYSIDE TORONTO

Drawing Title
LEVEL 5 FLOOR FRAMING PLAN

Project
Hines TRIDEL
AQUAVISTA
Block 3 - R3 & R4
Merchant's Wharf
Toronto, ON

As indicated	Drawn by
DC	IA/BBS
20140031	Checked by
SEPT 21 2015	Date

S1-12